



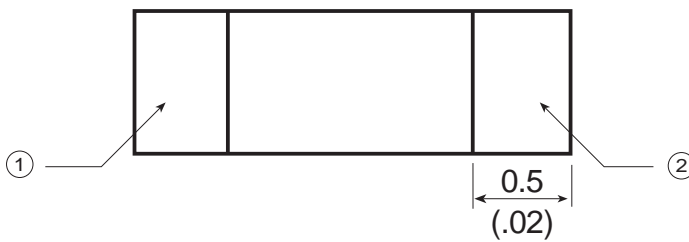
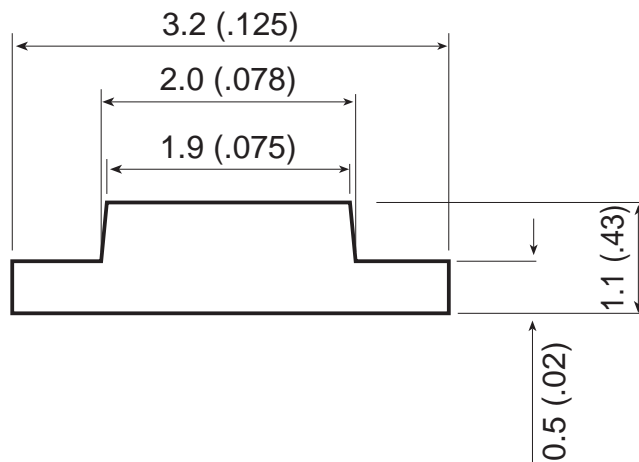
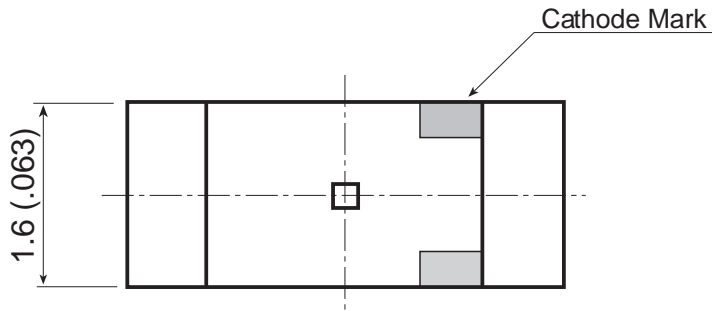
33 Guthrie Street, Osborne Park WA 6017. P.O. Box 1006, Osborne Park 6916.  
 Telephone: (08) 9244 2200 Facsimile: (08) 9244 3470 Web: www.sunindustries.com.au

**SMD CHIP LED 3216 (1206)**

**KP-3216**

UNIT: mm (inch.)

TOLERANCE:  $\pm 0.25$  ( $\pm 0.01$ )



PART NO.	SOURCE (DICE)	LENS TYPE (RESIN)	LUMINOUS INTENSITY MCD @20mA		VIEWING ANGLE 2 $\Theta$ 1/2
			MIN.	TYP.	
KP-3216YT	YELLOW (GaP/GaP)	YELLOW TRANSPARENT	5	12.5	120°
KP-3215YC		WATER CLEAR	5	12.5	120°
KP-3216IT	RED HIGH EFFICIENCY (GaAsP/GaP)	RED TRANSPARENT	4	12.5	120°
KP-3216EC		WATER CLEAR	4	12.5	120°
KP-3216SGT	GREEN (GaP)	GREEN TRANSPARENT	4	12.5	120°
KP-3216SGC		WATER CLEAR	4	12.5	120°