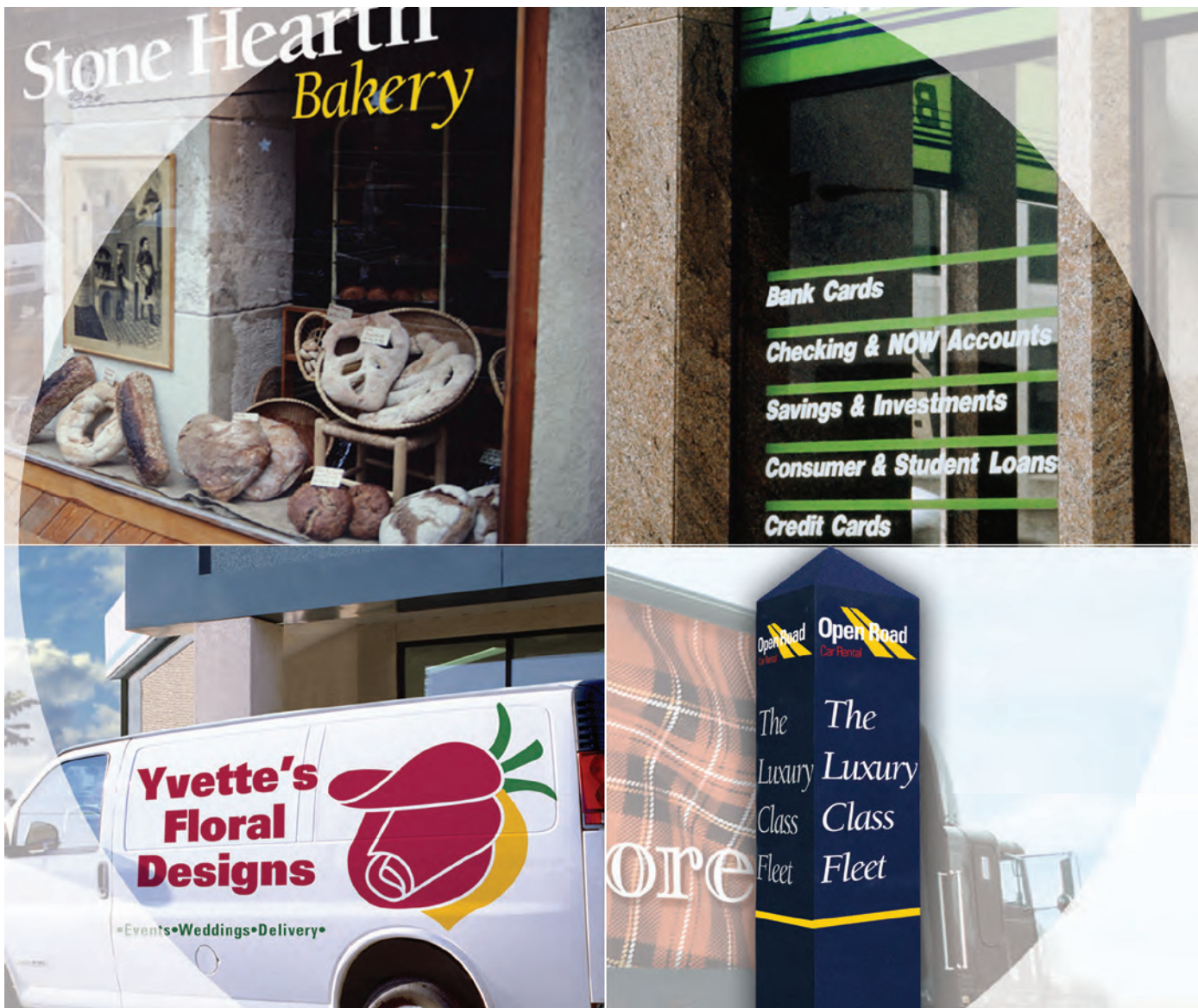


3M™ Scotchcal™ Graphic Film Series 50



This durable film offers the graphics market affordable, reliable 3M solutions for quality graphics and signs. Film series 50 is available in more than 25 of the most requested film colors. It has excellent layflat performance during the cutting process and can be applied to flat and slightly

curved surfaces. A durability of up to 5 years provides you with complete peace of mind. This film is ideal for indoor and outdoor applications requiring electronically-cut graphics, logos, emblems, lettering and labels for signs, vehicles and windows.

3M™ Scotchcal™ Graphic Film Series 50

Features	Advantages	Benefits
Calendered film	• Quality, durable graphics	Affordable graphics that meet the needs of your customers and increase customer satisfaction
3.0 mil thickness	• Easier handling	Optimized application time for lower costs
Excellent handling characteristics	• Clean, crisp cutting and weeding	Saves time, reduces waste and increases customer satisfaction
Clear, pressure sensitive adhesive	• Same film color from both sides	Versatile for windows and other transparent surfaces as well as opaque substrates
Removable adhesive	• Graphics stay in place until you want to remove them	Removes easily within 3 years, reducing labor costs and increasing customer satisfaction
Thermal mass transfer printable	• Quality thermal imaging	Increased sales and profits from new market opportunities
28 colors	• Provides spectrum of the most frequently requested colors	Great color choices for optimized inventory management
Stay flat paper liner	• Film lays flat during cutting processes	Reduces set up time, waste and labor to increase your profits
3M brand and Scotchcal brand	• Globally-recognized brand names that are synonymous with quality, reliability and innovation	Versatile and competitive product portfolio from a company you can trust

Suitable for indoors and outdoors?	• Yes.
Typical uses	• Commercial and industrial signage including emblems, vehicle graphics, labels, striping, window graphics and most other applications.
Suitable application surfaces and substrates	• Flat and simple curved surfaces without rivets. Most common substrates include flexible signage, glass, metal, acrylic, polycarbonate, fiberglass and painted surfaces.
Suitable for application over compound curves, corrugations or rivets	• No. For applications on such surfaces, we recommend 3M™ Scotchcal™ ElectroCut™ Graphic Film Series 7125 or Film Series 7725.
Maximum durability	• Up to 5 years.
Color range	• 28 colors, including matte white, matte black and transparent.
Minimum application temperature	• 40° to 100° F (4° to 38° C).
Adhesive type	• Clear, pressure sensitive adhesive.
Removability	• Removable with heat from most surfaces for up to 3 years; leaves little or no adhesive residue.
Suitable graphics production processes	• Hand, die, electronic cutting. Thermal mass transfer printable.
Recommended 3M Application Tapes (premask or prespacing)	• Use prespacing tape SCPS-2 if the film is weeded and much of the liner is exposed and/or small letters and/or narrow stroke width. Use premasking tape SCPM-3 if very little of the liner is exposed and/or a wide stroke width is used.

See Product Bulletin 50 for complete details.



Graphics Market Center

3M Center, Building 0220-12-E-04
St. Paul, MN 55144 USA
www.3m.com/graphics
Product Info. 1-800-328-3908

3M Canada

PO Box 5757
London, Ontario
Canada N6A 4T1
1-800-265-1840